

Light efficiency:



Light quality:



Color temperature:



Output: 1370 lm
Peak: 25996 cd
Power: 38.1 W
PF: 0.96



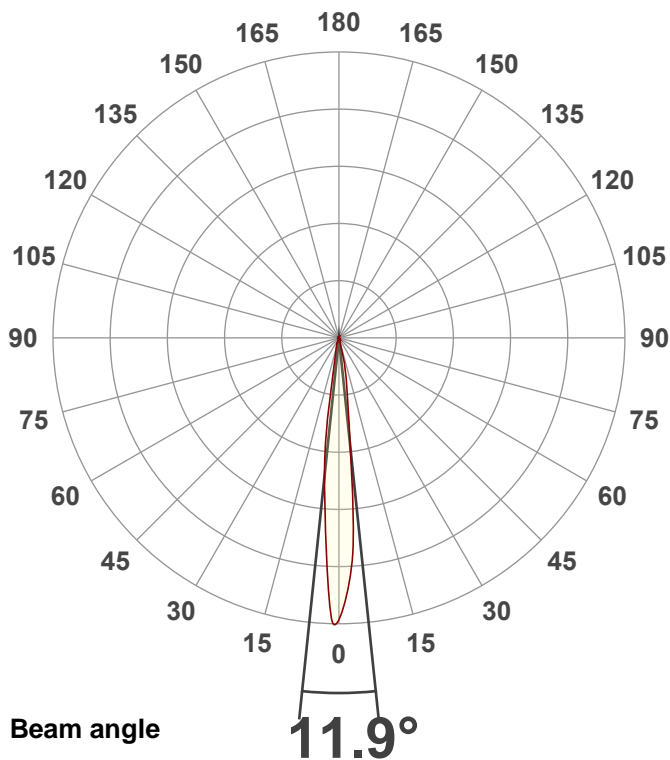
Tracking number: [n/a](#)

Product name:
ElectraPix Par 7

Item number:
6500K

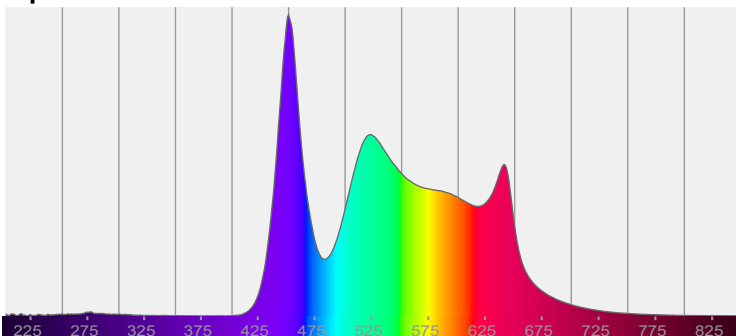
Date and time:
9/9/2024 11:31:44 AM

Description:
@ 127

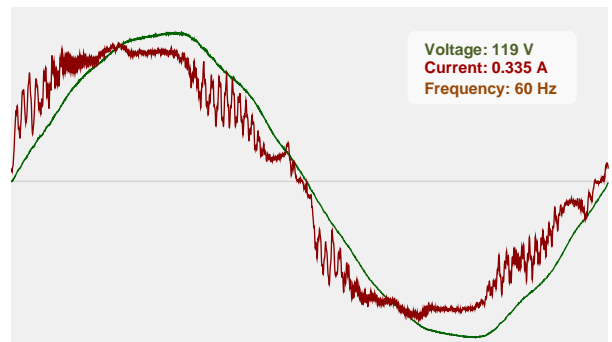


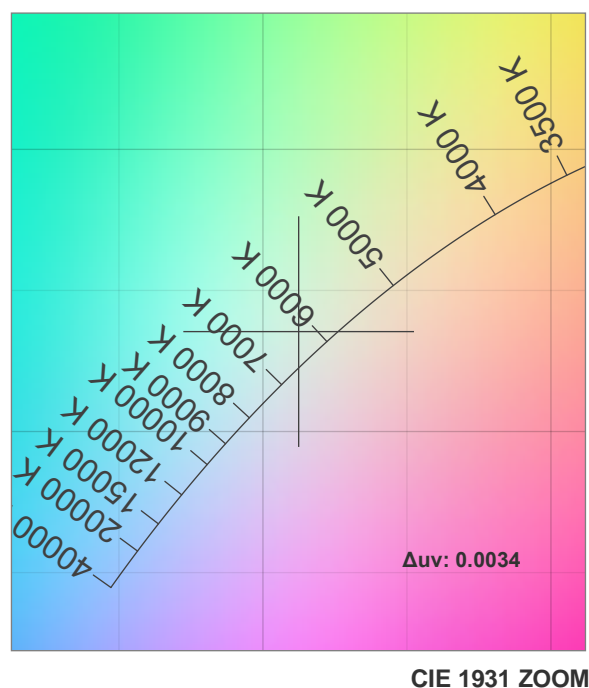
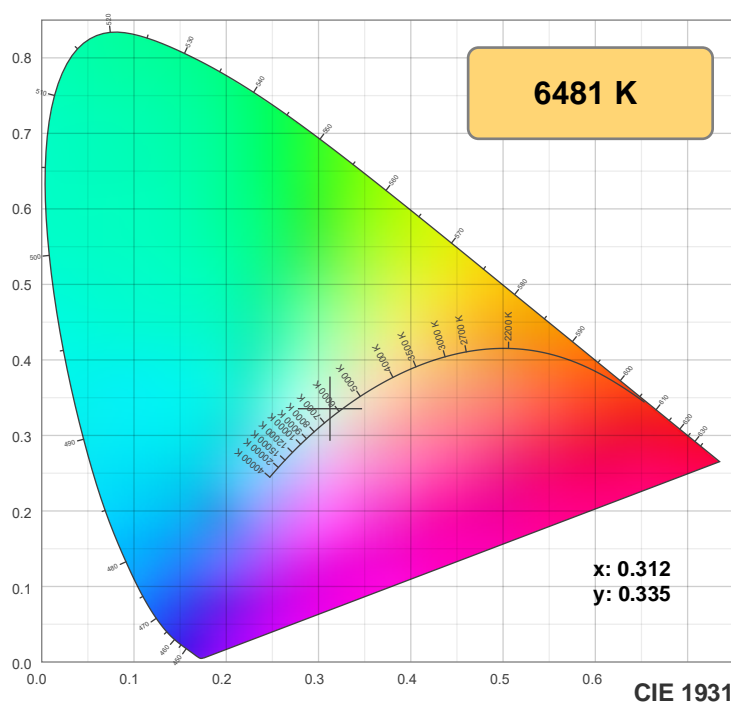
CIE 1931
x: 0.312
y: 0.335

Spectra

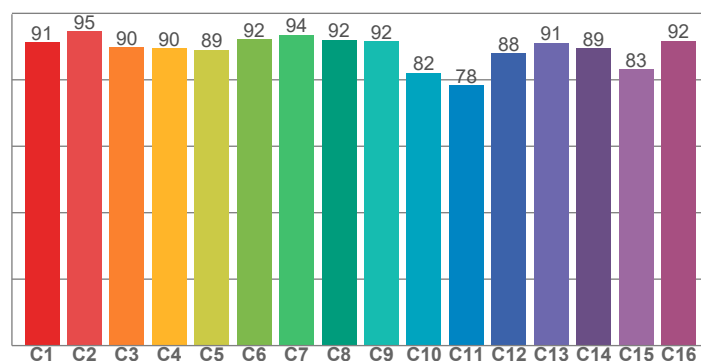


Power

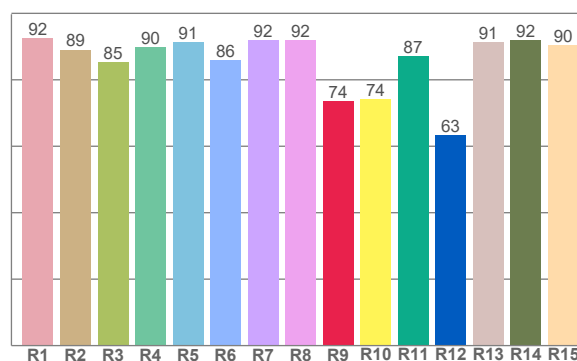




TM-30: 89.1



CRI: 89.7 (R1-R8)



CRI R values, only R1-R8 are used to calculate final CRI value

R1	R2	R3	R4	R5	R6	R7	R8	R9	R10	R11	R12	R13	R14	R15
92.4	89.1	85.4	89.7	91.3	85.9	92.0	91.9	73.6	74.2	87.0	63.4	91.3	91.9	90.3

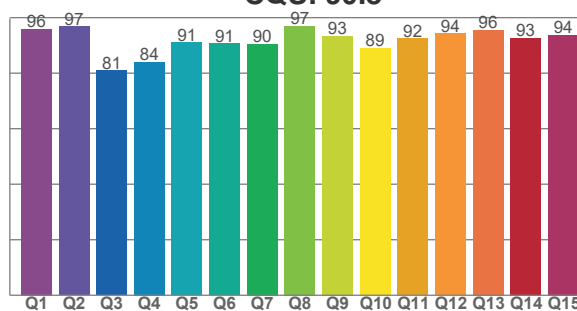
TM30 C values, 16 binned values out of total of 99 C values

C1	C2	C3	C4	C5	C6	C7	C8	C9	C10	C11	C12	C13	C14	C15	C16
91.2	94.7	89.7	89.5	89.0	92.2	93.6	92.0	91.6	82.2	78.3	87.9	91.1	89.4	83.1	91.7

CQS Q values

Q1	Q2	Q3	Q4	Q5	Q6	Q7	Q8	Q9	Q10	Q11	Q12	Q13	Q14	Q15
95.9	96.9	81.0	84.1	91.1	90.7	90.4	97.0	93.3	89.0	92.5	94.3	95.6	92.7	93.8

CQS: 90.8



Color parameters

Color temperature	Color rendering index	Red component	Color fidelity	Color gamut	Color quality scale	Color coordinate cie 1931	Color coordinate cie 1931	Color coordinate	Color coordinate	Color deviation from black body
CCT	CRI	CRI R9	TM30 Rf	TM30 Rg	CQS	x	y	u	v	Δuv
6481 K	89.7	73.6	89.1	101.6	90.8	0.312	0.335	0.195	0.314	0.0034

TM-30 details

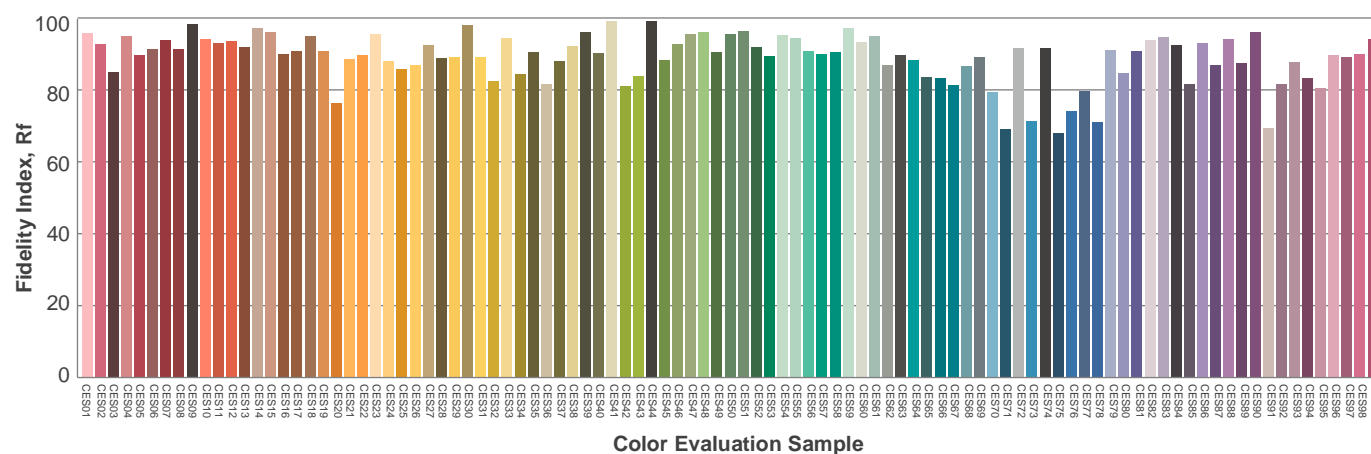
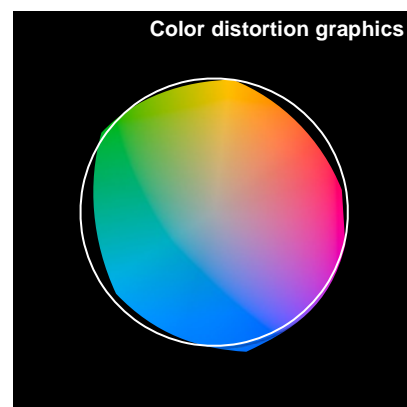
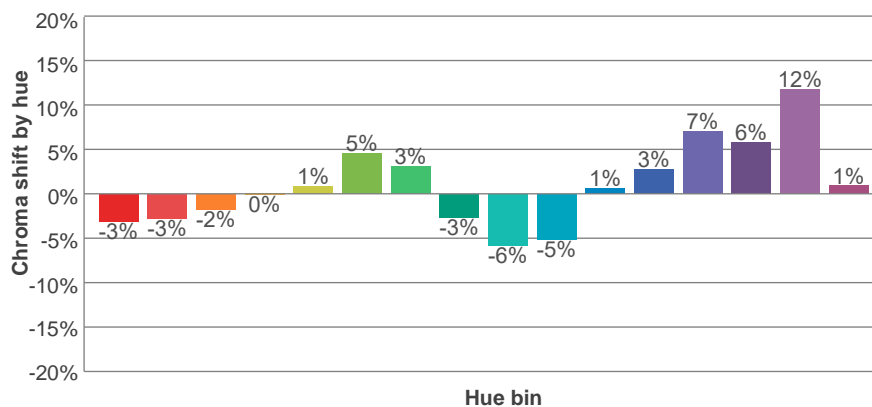
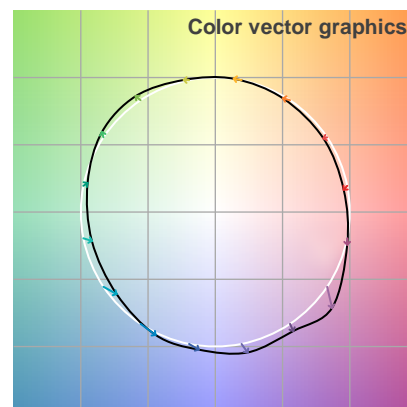
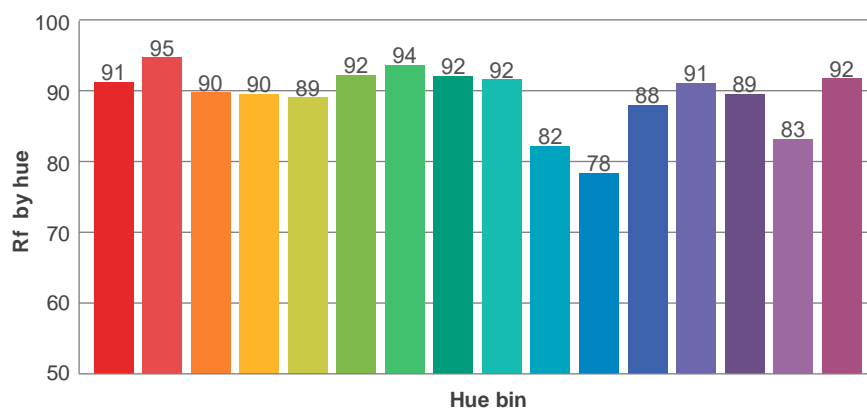
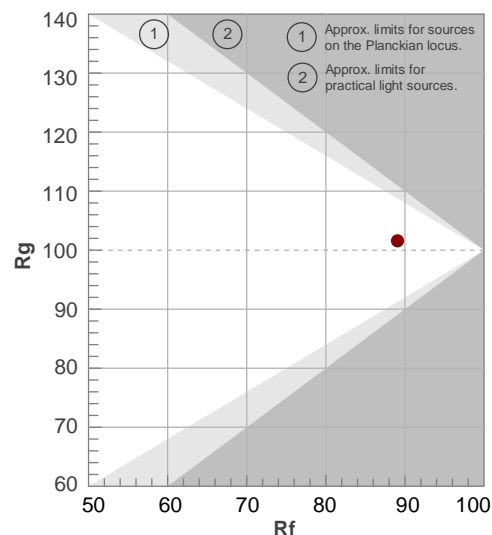
Rf 89.1

Fidelity index Rf

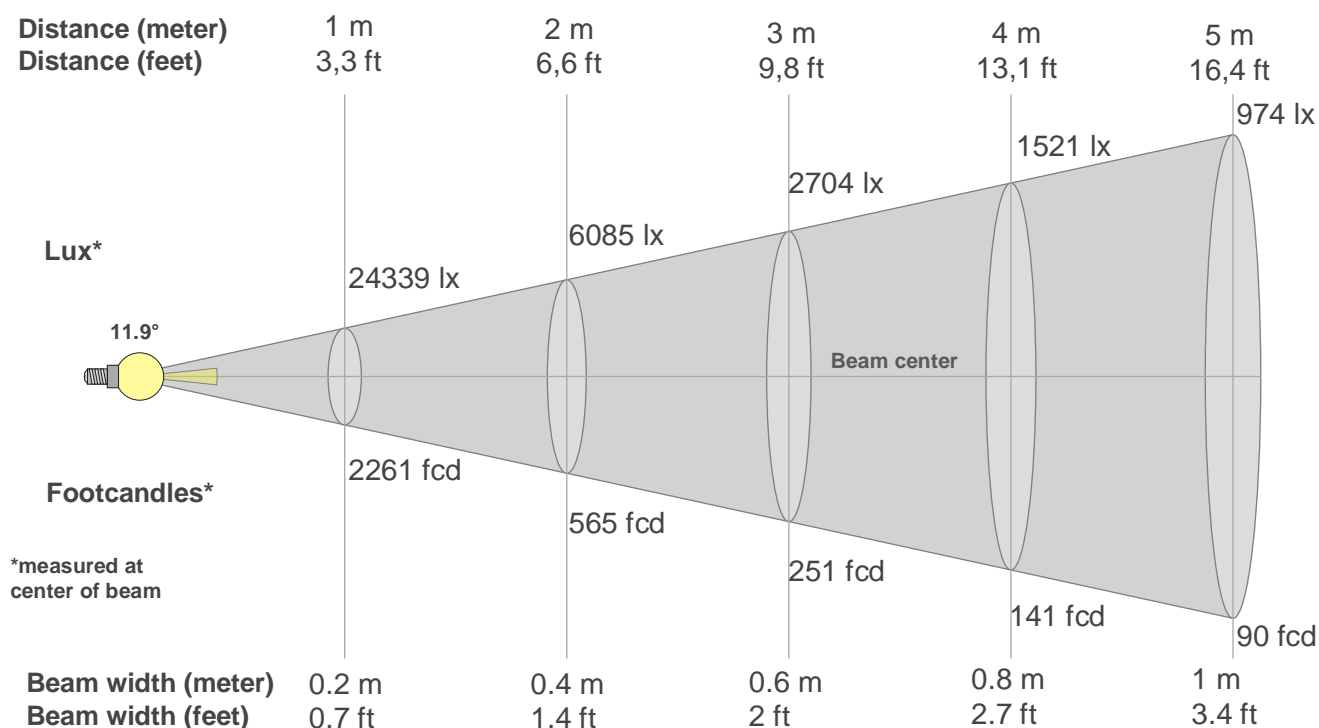
Rg 101.6

Gamut index Rg

Hue Bin	R _f	Shifts (%)	
		Chroma	Hue
1	91	-3%	-2%
2	95	-3%	1%
3	90	-2%	5%
4	90	0%	6%
5	89	1%	4%
6	92	5%	1%
7	94	3%	-3%
8	92	-3%	-3%
9	92	-6%	3%
10	82	-5%	10%
11	78	1%	14%
12	88	3%	8%
13	91	7%	3%
14	89	6%	-1%
15	83	12%	-11%
16	92	1%	-5%



Beam details



Beam intensities from 1-20m

1m	2m	3m	4m	5m	6m	7m	8m	9m	10m	11m	12m	13m	14m	15m	16m	17m	18m	19m	20m
3.3ft	6.6ft	9.8ft	13.1ft	16.4ft	19.7ft	23ft	26.2ft	29.5ft	32.8ft	36.1ft	39.4ft	42.7ft	45.9ft	49.2ft	52.5ft	55.8ft	59.1ft	62.3ft	65.6ft
24339lx	6085lx	2704lx	1521lx	974lx	676lx	497lx	380lx	300lx	243lx	201lx	169lx	144lx	124lx	108lx	95lx	84lx	75lx	67lx	61lx
2261.1fcd	565.3fcd	251.2fcd	141.3fcd	90.4fcd	62.8fcd	46.1fcd	35.3fcd	27.9fcd	22.6fcd	18.7fcd	15.7fcd	13.4fcd	11.5fcd	10fcd	8.8fcd	7.8fcd	7fcd	6.3fcd	5.7fcd

Intensities in 0° c-plane

0°	1°	2°	3°	4°	5°	6°	7°	8°	9°	10°	11°	12°	13°	14°	15°	16°	17°	18°	19°
24.3K	23.1K	21.9K	20.6K	18.8K	15.8K	12.8K	9.9K	6.9K	4.6K	3.8K	2.9K	2.0K	1.1K	0.5K	0.4K	0.4K	0.3K	0.2K	0.2K
100%	95%	90%	85%	77%	65%	53%	41%	28%	19%	15%	12%	8%	5%	2%	2%	2%	1%	1%	1%

Intensities in 90° c-plane

0°	1°	2°	3°	4°	5°	6°	7°	8°	9°	10°	11°	12°	13°	14°	15°	16°	17°	18°	19°
24.3K	23.1K	21.9K	20.6K	18.8K	15.8K	12.8K	9.9K	6.9K	4.6K	3.8K	2.9K	2.0K	1.1K	0.5K	0.4K	0.4K	0.3K	0.2K	0.2K
100%	95%	90%	85%	77%	65%	53%	41%	28%	19%	15%	12%	8%	5%	2%	2%	2%	1%	1%	1%

Intensities in 180° c-plane

0°	1°	2°	3°	4°	5°	6°	7°	8°	9°	10°	11°	12°	13°	14°	15°	16°	17°	18°	19°
24.3K	25.6K	24.1K	21.3K	18.5K	15.7K	12.9K	10.6K	8.5K	6.5K	4.4K	2.4K	1.5K	1.3K	1.0K	0.7K	0.4K	0.3K	0.3K	0.2K
100%	105%	99%	88%	76%	64%	53%	43%	35%	27%	18%	10%	6%	5%	4%	3%	2%	1%	1%	1%

Intensities in 270° c-plane

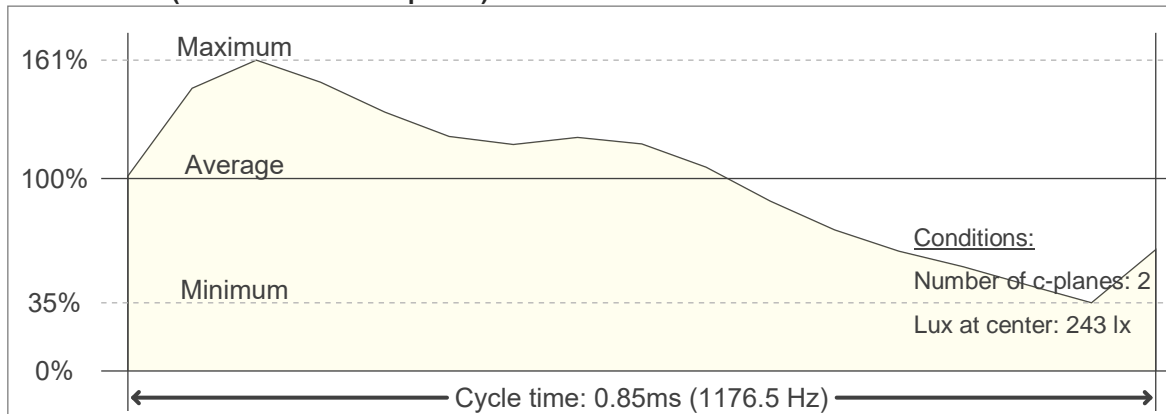
0°	1°	2°	3°	4°	5°	6°	7°	8°	9°	10°	11°	12°	13°	14°	15°	16°	17°	18°	19°
24.3K	25.6K	24.1K	21.3K	18.5K	15.7K	12.9K	10.6K	8.5K	6.5K	4.4K	2.4K	1.5K	1.3K	1.0K	0.7K	0.4K	0.3K	0.3K	0.2K
100%	105%	99%	88%	76%	64%	53%	43%	35%	27%	18%	10%	6%	5%	4%	3%	2%	1%	1%	1%

Beam angle 50%	Field angle 10%	Cutoff angle 2,5%	Intensity ratio in 120° cone	Intensity ratio in 90° cone
11.9°	22.2°	28.7°	99.8%	98.2%

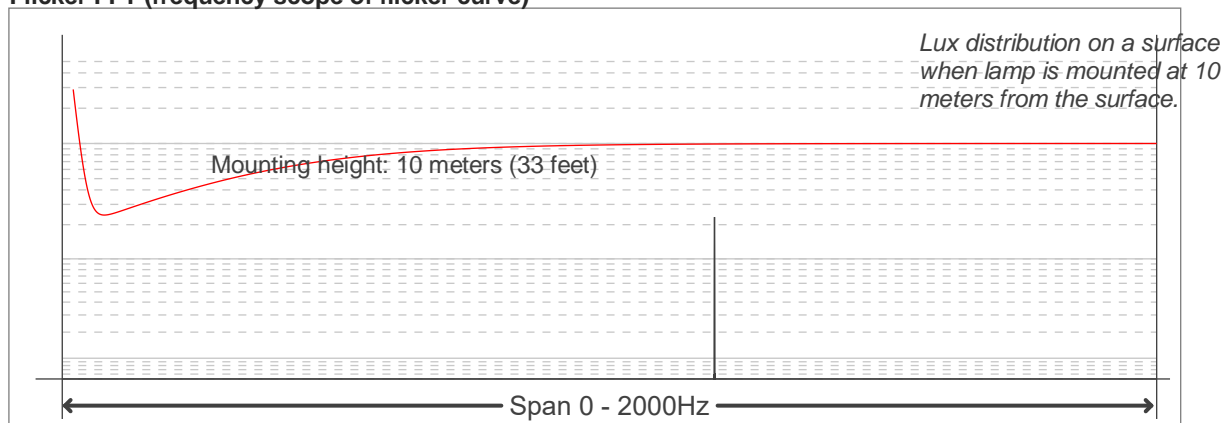
Flicker

Flicker curve (complete sampled flicker signal)

Flicker frame (frame of one flicker period)



Flicker FFT (frequency scope of flicker curve)



Flicker results:

Flicker frequency:		1176.47 Hz	
Flicker index:	0.16	JA8/10 40Hz	0.07 %
Flicker percentage:	71.29 %	JA8/10 90Hz	0.08 %
SVM: (Visual flicker)	0.47	JA8/10 200Hz	0.17 %
PstLM	0.04	JA8/10 400Hz	0.53 %
Mp	0.02	JA8/10 1000Hz	5.43 %

Flicker conditions:

Sample rate:	20000 samples/second
--------------	----------------------